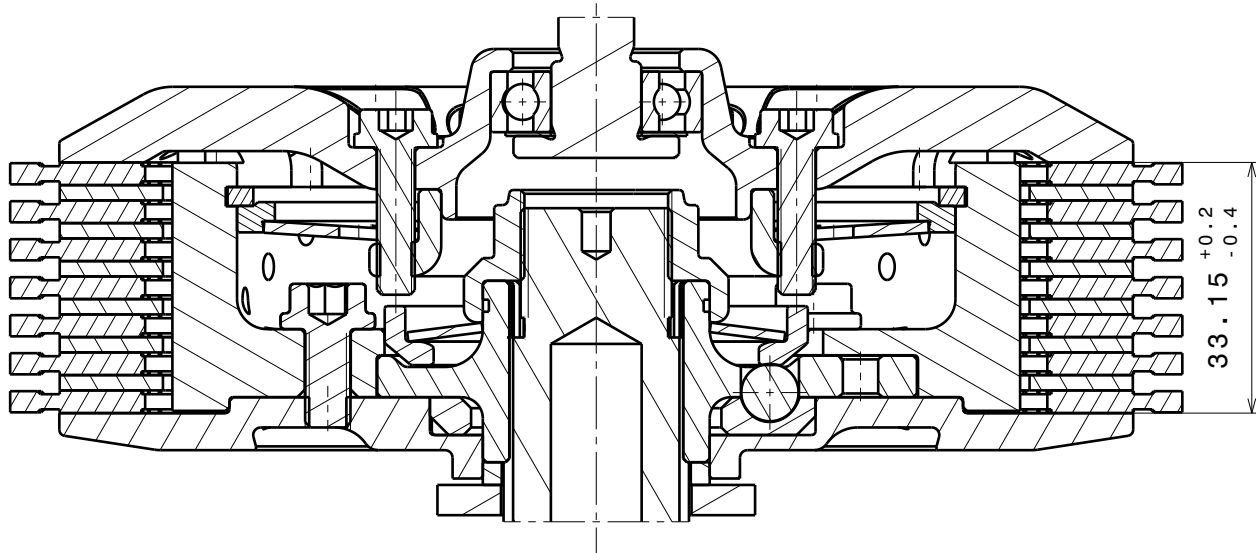
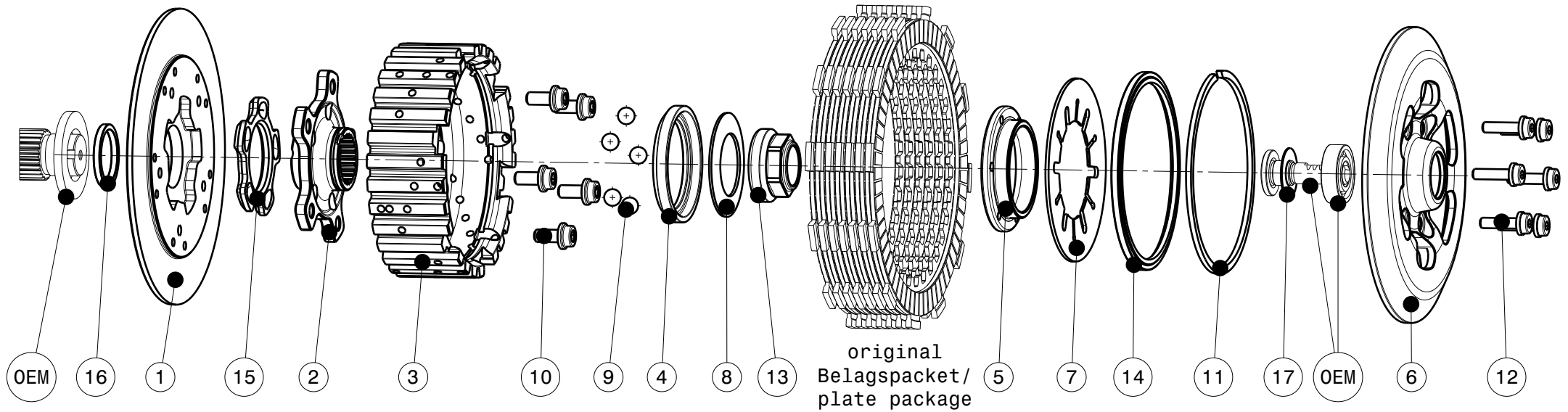


# 004-65001-4 SuterClutch Yamaha MT-07 / XSR700 2014-2020



**Das angegebene Belagspaketmass ist zwingend einzuhalten!**  
**The plate package thickness must be strictly adhered to!**

| ITEM LIST (1463) |                                    |                  |          |
|------------------|------------------------------------|------------------|----------|
| ITEM             | PART NAME                          | SRT NUMBER       | QTY      |
| 1                | BACK PLATE                         | 004-65720        | 1        |
| 2                | HUB CARRIER                        | 004-15704        | 1        |
| 3                | INNER HUB                          | 004-33741        | 1        |
| 4                | RELEASE RING                       | 004-15975        | 1        |
| 5                | KLAMP HUB 7mm                      | 004-00507        | 1        |
| 6                | PRESSURE PLATE                     | 004-65940        | 1        |
| 7                | <b>MAIN SPRING 47x88x1310N</b>     | <b>004-88131</b> | <b>1</b> |
| 8                | <b>TORQUE LIMITER SPRING 1700N</b> | <b>004-50170</b> | <b>1</b> |
| 8.1              | TORQUE LIMITER SPRING 1900N        | 004-50190        | 1        |
| 8.2              | TORQUE LIMITER SPRING 1500N        | 004-50150        | 1        |
| 9                | BALL 8mm                           | 004-17801        | 5        |
| 10               | BOLT M6x13                         | 004-17835        | 5        |
| 11               | CIRCLIP 95mm                       | 004-17813        | 1        |
| 12               | DISTANCE BOLT M5x19.5              | 004-05195        | 6        |
| 13               | MAIN NUT M20x1 L=5.5               | 004-999201055    | 1        |
| 14               | LOCKING RING 95mm                  | 004-00695        | 1        |
| 15               | <b>RAMP INSERT 27.5°</b>           | <b>004-00721</b> | <b>1</b> |
| 16               | THRUST WASHER (3.0)                | 004-65950        | 1        |
| 17               | SHIM 12x24x0.5                     | BN748-12x24x0.5  | 1        |